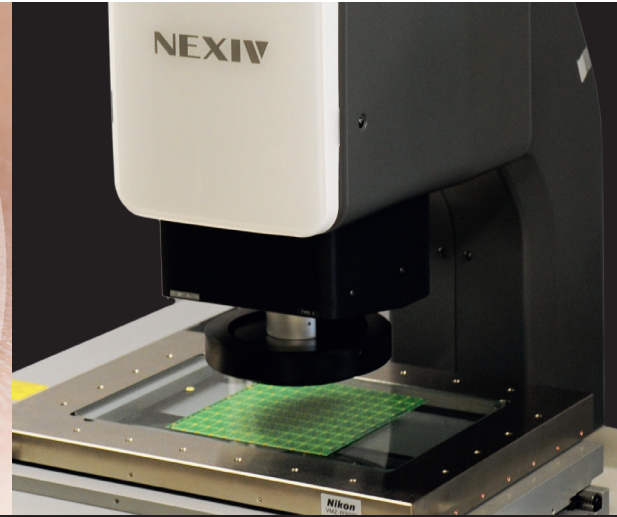




ApplicationFocus

Cataract Lenses



Inspection and measurement of Cataract lens implants

The demand for intraocular lens (IOL) for cataract correction surgery is increasing. IOL requires a lens to be surgically implanted in the eye to replace a human lens degraded by cataracts or myopia. To meet individual patient requirements, the critical dimensions of every IOL lens must be checked and verified. Measurement of these critical dimensions in high volumes must be made using high-speed automated measurement equipment in order to meet the growing demand.

The material used in manufacturing IOL is soft, foldable, and inert. These properties pose a challenge for both manual and automated measurement. Nikon's New NEXIV Metrology instrument has overcome these difficulties and is very capable of measuring the critical dimensions using powerful software tool such as search capability and customized vision auto focus.

Customer's Challenge

The customer requires a system with following capabilities:

- To search feature targets automatically
- Obtain clear images
- Generate feedback for process improvement

Nikon's Solution

NEXIV VMZ-R3020 or iNEXIV VMA2520 with Auto measure Software provides:

- Searching of product feature targets using Nikon's original vision processing algorithms
- New high performance (Numerical Aperture) optical lens systems developed by Nikon
- Generating the quantitative data for statistical process control and improvement
- Measuring multiple samples with faster throughput times

CNC Video Measuring Systems

NEXIV

